

Hybrid Electric Vehicles (HEV'S)



What is an HEV Vehicle?

- A hybrid electric vehicle (HEV) combines the internal combustion engine of a conventional vehicle with the battery and electric motor of an electric vehicle, resulting in twice the fuel economy of conventional vehicles.



Types of HEV's Available

- Honda Civic
- Honda Insight
- Toyota Prius
- Toyota Highlander



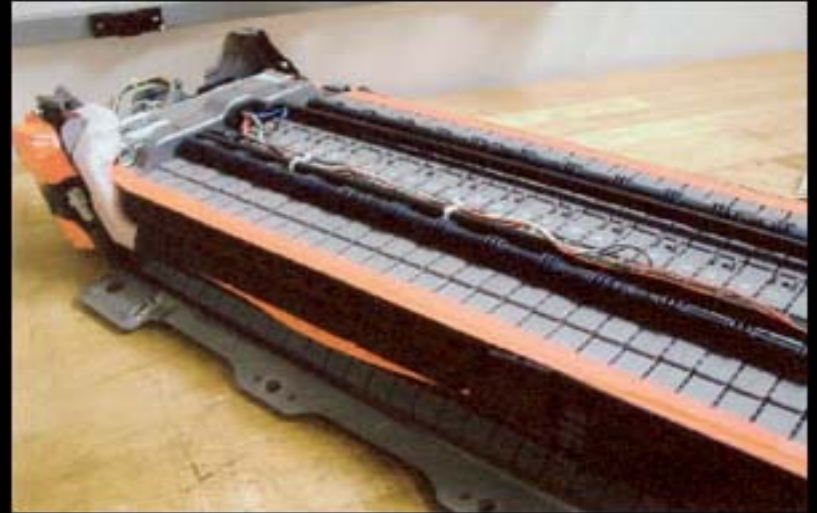
High Voltage Battery Packs

- Honda Insight
 - 48 pounds
 - 144 volts
 - Immediately behind the drivers and passengers seat in the “IPU” compartment



High Voltage Battery Packs

- Toyota Prius
 - 110 pounds
 - 273.6 volts
 - Behind seat in trunk



Identification

- Rear trunklid
- Vented C-pillar
- Sticker in window
- Orange cables
- Instrument cluster



Extrication Considerations

- Place vehicle in neutral (push “P”)
- Turn off ignition before doing anything
- Disconnect the 12 volt battery
- Never touch or cut near anything orange!!



Extrication Considerations

- Be cautious around fluids
- A,B,and C pillars may be filled with foam or rubber



Fire Considerations

- Battery pack fires
- Fires can be extinguished using common firefighting procedures



Summary

- Conduct a proper size-up
- Make sure vehicle is disabled before attempting rescue
 - Keep smart key away from vehicle
 - Never touch anything orange
- Defensive mode for high voltage battery fires
 - Stay aware!

