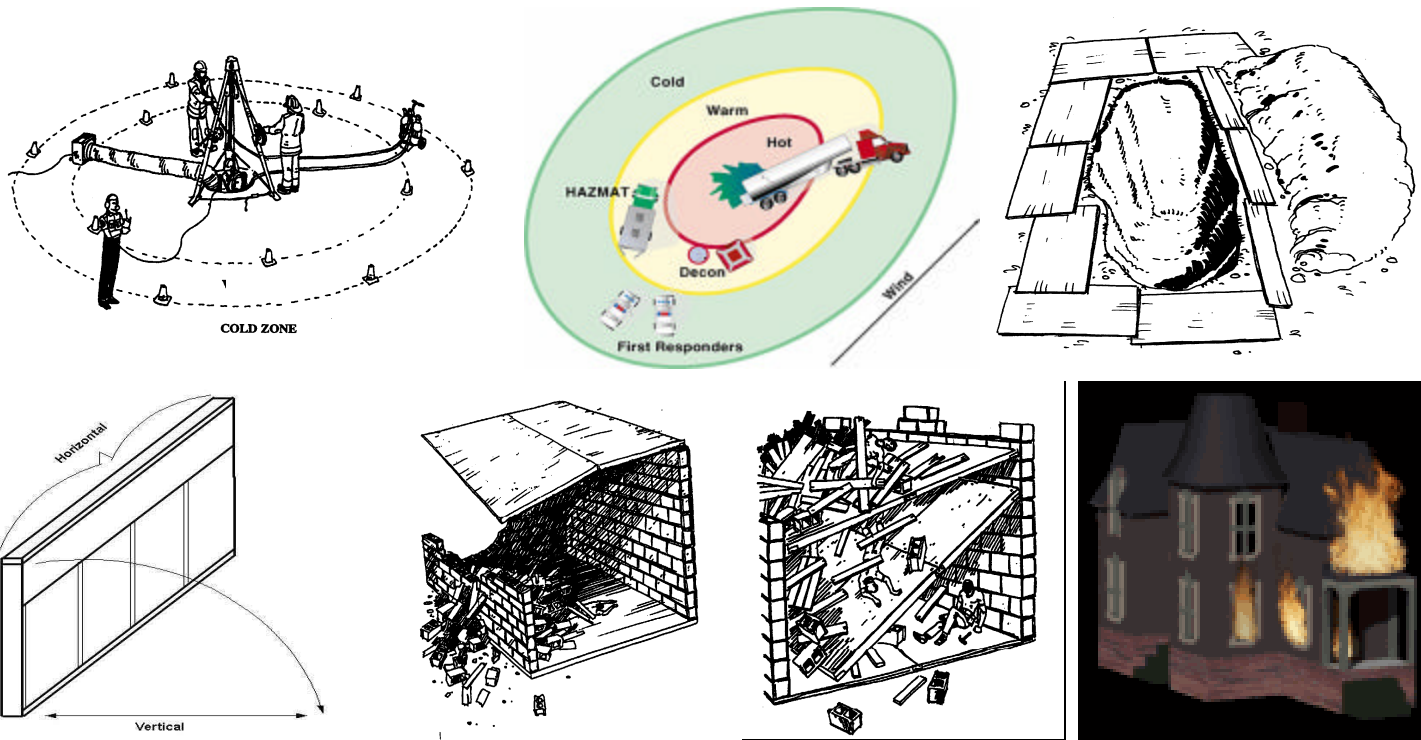


## Safety Zones

### Discussion

The establishment of safety or operational zones at hazmat incidents and technical rescue events is a long accepted practice. The fireground could also benefit from the safety zone concept as well. There are many accepted definitions for who and what can enter each zone, many tying back to the IDLH (Immediately Dangerous to Life and Health) principle. At a structure fire, the interior of a structure is considered IDLH when a fire is uncontained, unventilated, and producing heat and smoke. At a defensive fire, working in the collapse zone could be considered IDLH also. Using these principles, determine what persons and activities could take place in each zone of operation. Additionally, determine what levels of PPE are required and what equipment is located within each zone. Consider multiple types and locations for each type of incident. RIT staging locations, rehab, apparatus locations, safety monitoring in the zones should all be considered in your discussion. Review your department SOG's for resource information.



Incident Type	Hot Zone 1. Who Can Enter 2. Distance	Warm Zone 1. Who Can Enter 2. Distance	Cold Zone 1. Who Can Enter 2. Distance	Equipment Required or Allowed in Each Zone	How are Monitoring of Zone Conditions Completed	Personnel Safety in Each Zone 1. PPE Levels
Offensive Structure Fire						
Defensive Structure Fire						
Trench Rescue						
Confined Space						
Vehicle Accident						
HazMat Incident						
Water Incident						