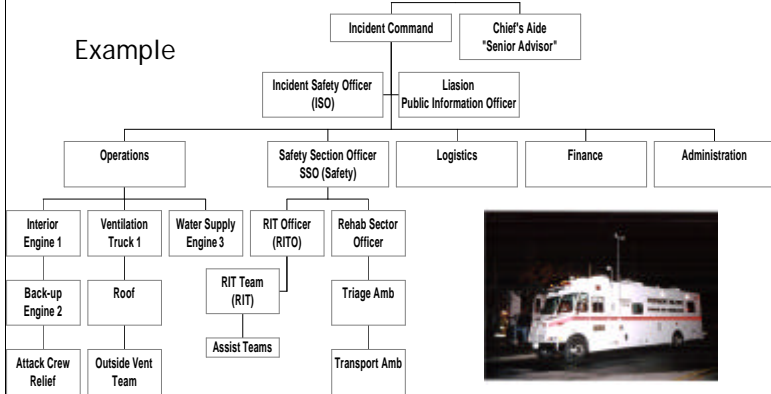


## Incident Management System

### Discussion

Effective incident management requires members to know what sectors, divisions or groups are being used and what the role and function is. Part of this knowledge requires an understanding of the organizational structure for incident management. Department policies will sometimes identify what responsibilities lie for each position within the IMS and other incidents will require the incident commander establish positions to fill special needs. Using references identified by department training instructors and officers, identify position responsibilities and communication pathways for each level of your incident command structure. Strong command structure and is essential to firefighter safety.

Example



### Instructions

Using the positions identified in the chart below or substitute the names of IMS positions your department uses, discuss the functions of the position, who they report to and who reports to them. Identify the radio designation and channel assignment used in for a fire incident within your department.

**Review Department Policies on IMS for Fireground Operations**

*Indicate references here*



Position or Function	Primary Functions	1. Reports To 2. Reports To Them	Radio Designation	Channel Assignment	References
Incident Command					
Operations					
Sector Officer <i>Interior, Roof, Water Supply</i>					
Incident Safety Officer (ISO)					
RIT & RIT Officer (RIT & RITO)					
Safety Section Officer (SSO)					
Staging					
Accountability					