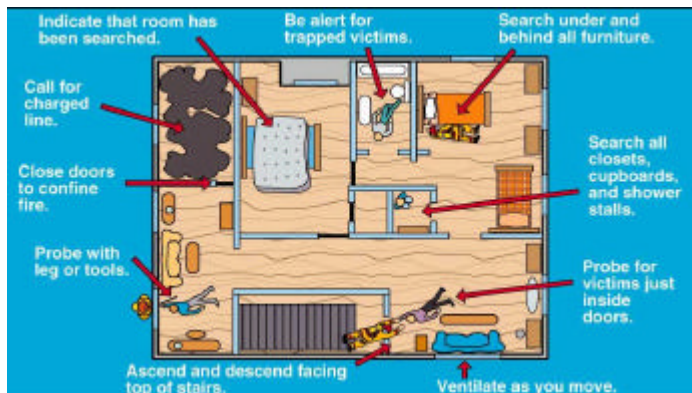


Search Safety

10 Commandments of a Safe and Effective Primary Search

Fire Engineering, August 2002, p. 85

1. Search with a partner
2. Conduct a thorough size-up
3. Carry a tool and hand light
4. Use all of your personal protective equipment
5. Control the door
6. Have a plan
7. Stay in contact with a wall
8. Ensure people (IC) know where you are
9. Monitor fire conditions
10. Remain oriented



Review department SOG's on primary search and rescue.

- What tools are used during primary search?
- Describe at least 3 types of search patterns or techniques
- Define a PRIMARY search. How is it different from a SECONDARY search?
- Discuss the time of day and probabilities factors relating to primary search operations.
- What landmarks can you use to help identify the basic layout of the interior of a structure from the outside. Why is this important?

